

# Wade Hampton Boulevard (Hwy 29) Retail

Retail Space and Outparcels Available for Lease  
Greenville, South Carolina

- 2100 Suite D - ~16,750 SF
- Outparcel Available - 0.70 acres

## PROPERTY FEATURES:

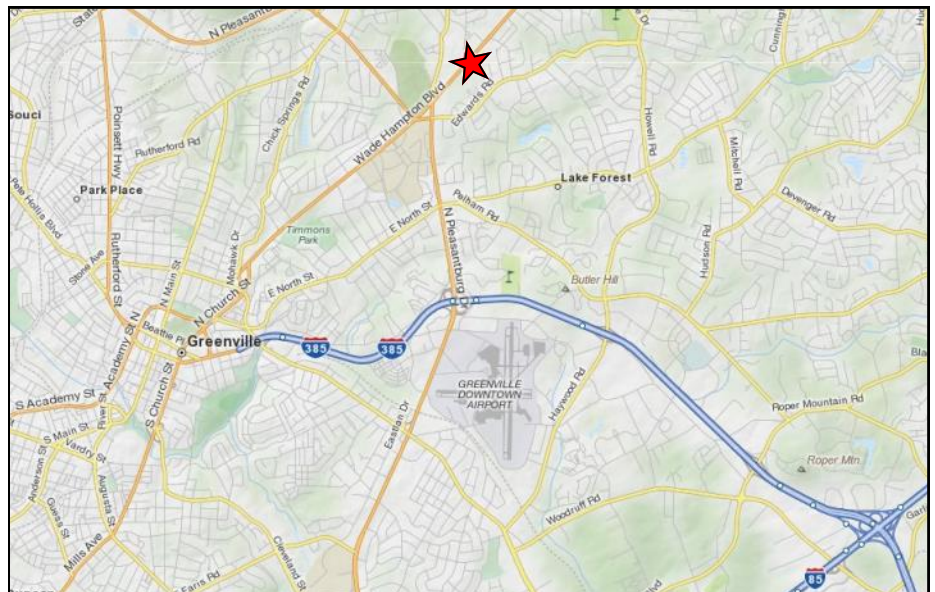
- Located across from Wade Hampton High School
- Highly visible location on Wade Hampton
- New updated façade, parking lot, and landscaping
- 32,000 VPD on Wade Hampton

## CO-TENANTS:

Ollie's Bargain Outlet  
Roses  
Planet Fitness  
Mighty Dollar  
CitiTrends  
Upstate Furniture & Mattress

## AREA RETAILERS:

Target  
Walmart Neighborhood Market  
Walmart Supercenter  
QuickTrip



For more information contact:

Ryan Peiffer  
864.242.2100 (office)  
864.991.7147 (cell)  
Ryan@HughesInvestments.com

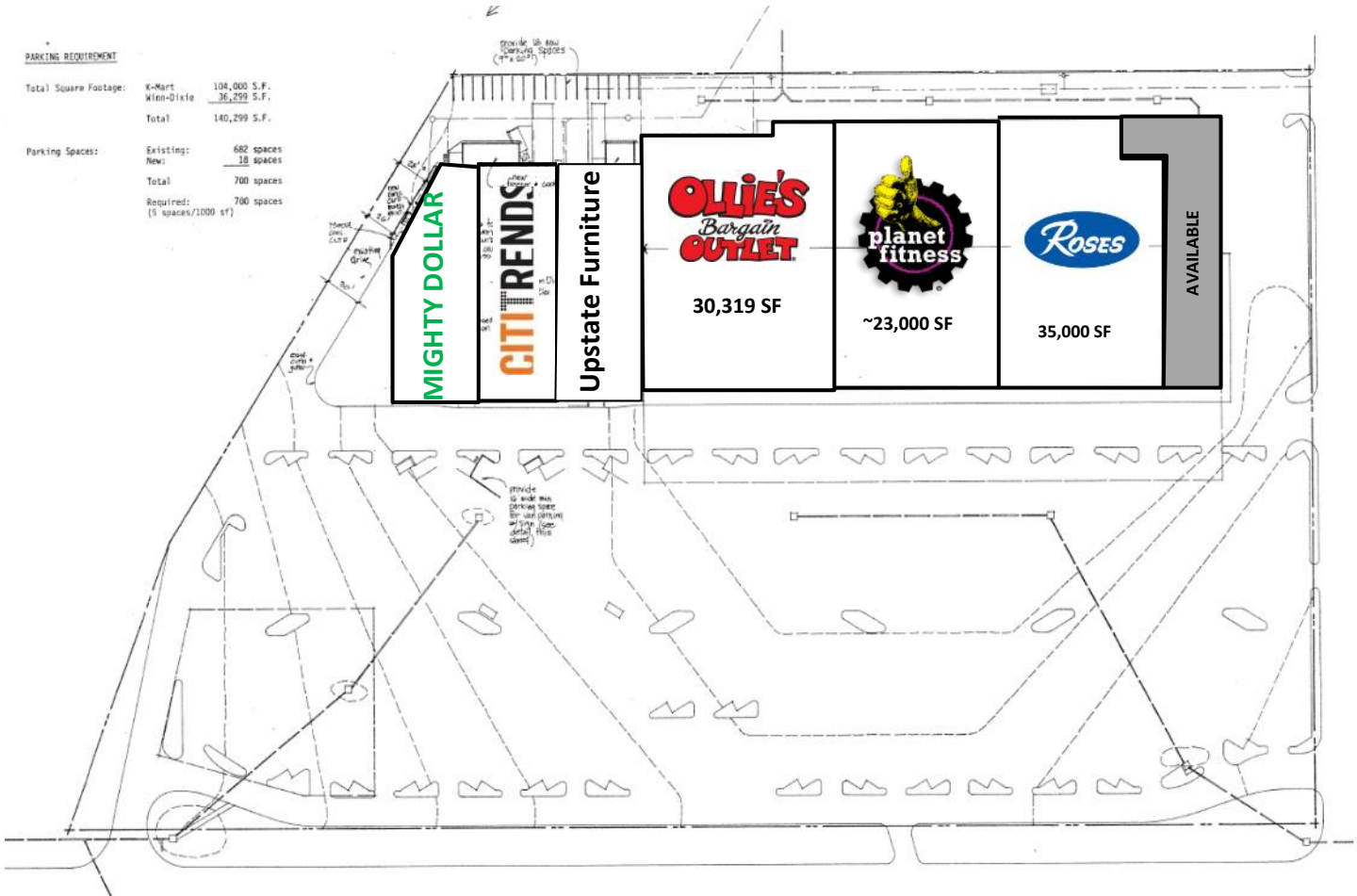


# Wade Hampton Boulevard Retail

Retail Space Available for Lease

Greenville, South Carolina

## SITE PLAN:



For more information contact:

Ryan Peiffer

864.242.2100 (office)

864.991.7147 (cell)

[Ryan@HughesInvestments.com](mailto:Ryan@HughesInvestments.com)

# Wade Hampton Boulevard Retail

Retail Space Available for Lease

Greenville, South Carolina

END CAP SPACE AVAILABLE

Existing



Possible Restaurant Space with Outdoor Dining



For more information contact:

Ryan Peiffer

864.242.2100 (office)

864.991.7147 (cell)

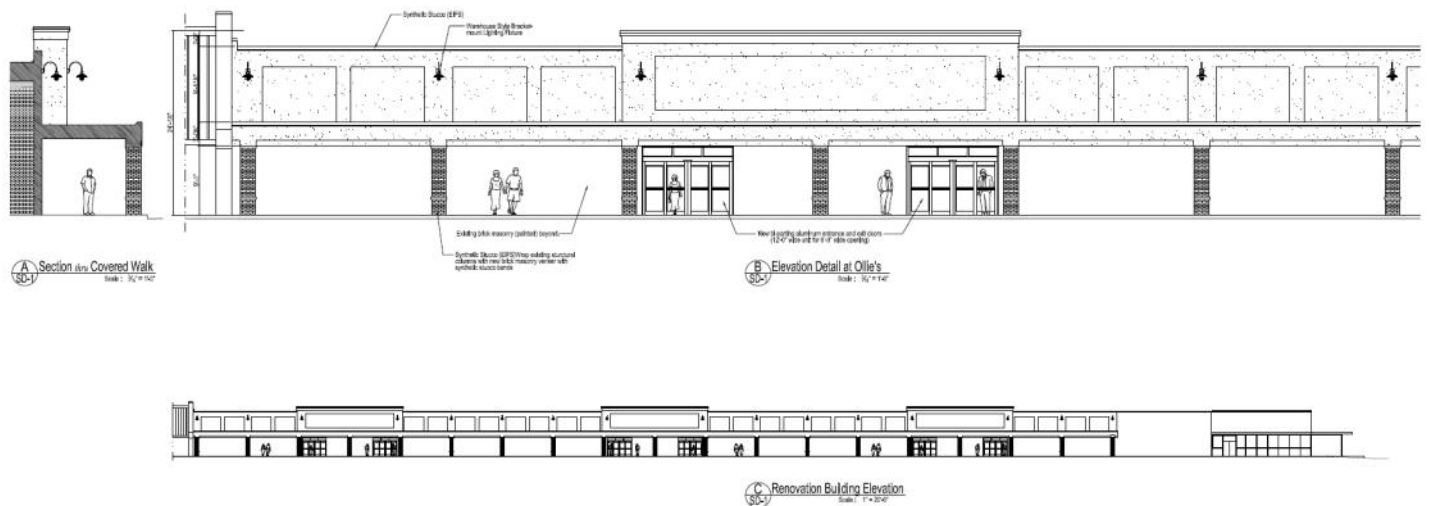
[Ryan@HughesInvestments.com](mailto:Ryan@HughesInvestments.com)

# Wade Hampton Boulevard Retail

Retail Space Available for Lease

Greenville, South Carolina

New Façade Design



For more information contact:

Ryan Peiffer

864.242.2100 (office)

864.991.7147 (cell)

[Ryan@HughesInvestments.com](mailto:Ryan@HughesInvestments.com)

# Wade Hampton Boulevard Retail

Retail Space Available for Lease

Greenville, South Carolina

OUTPARCEL FOR GROUND LEASE



For more information contact:

Ryan Peiffer

864.242.2100 (office)

864.991.7147 (cell)

[Ryan@HughesInvestments.com](mailto:Ryan@HughesInvestments.com)